

# Symbols Library for tef265 font, Part A (all visible characters) 2019-07-16.tef

Alan Melvin

Draft July 16 2019

Character numbers (ASCII decimal -- see "Notes"):

[34] [35] [36] [37] [38] [39] [40] [41]

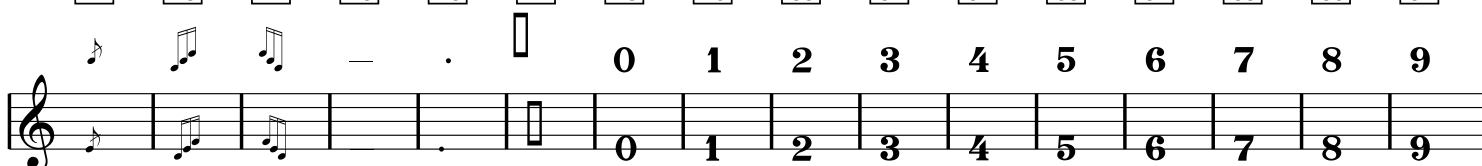
Appearance using "Insert" --> "Special Character" --> "Musical Symbol" (if available) :



Same texts shown in "Times New Roman":

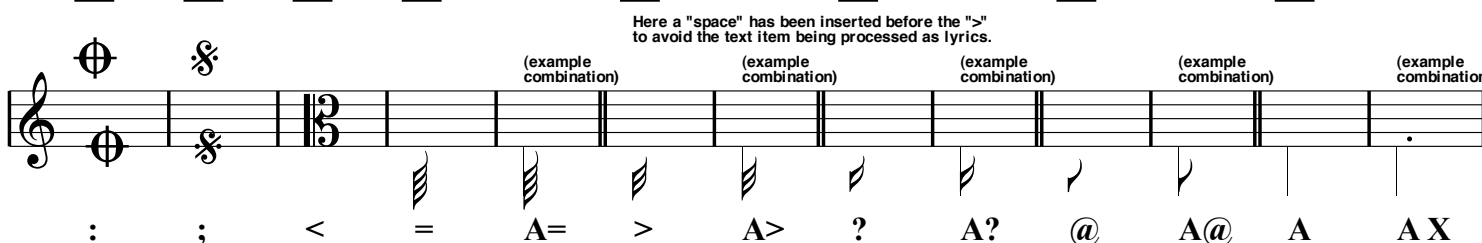
" # \$ % & ' ( )

[42] [43] [44] [45] [46] [47] [48] [49] [50] [51] [52] [53] [54] [55] [56] [57]



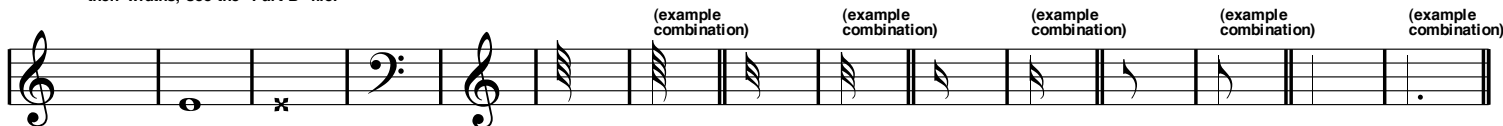
\* + , - . / 0 1 2 3 4 5 6 7 8 9

[58] [59] [60] [61] [62] [63] [64] [65]



[66] [67] [68] [69] [70] [71] [72] [73] [74] [75]

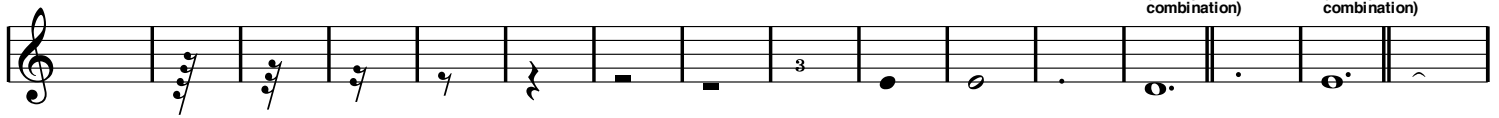
For all blank-space characters and their widths, see the "Part B" file.



B C D E F G KG H KH I KI J KJ K K X

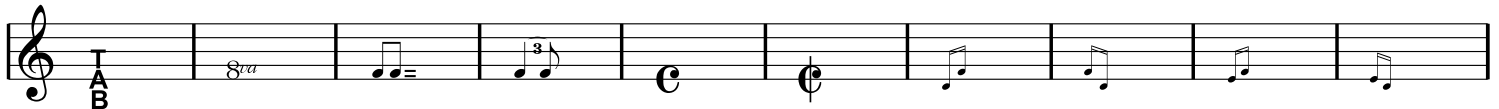
[76] [77] [78] [79] [80] [81] [82] [83] [84] [85] [86] [87] [88] [89]

For all blank-space characters and their widths, see the "Part B" file.



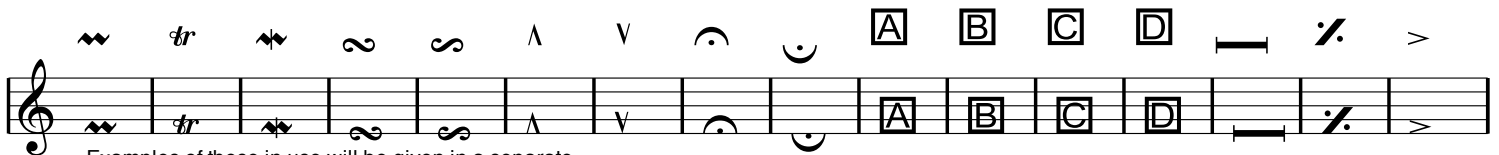
L M N O P Q R S T U V W CW X CX Y

[90] [91] [92] [93] [94] [95] [96] [97] [98] [99]



Z [ \ ] ^ \_ ` a b c

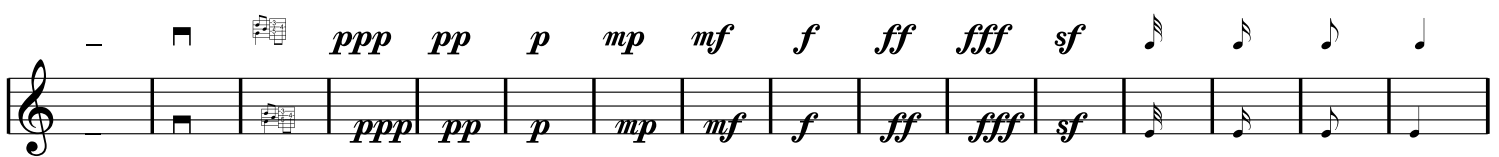
[100] [101] [102] [103] [104] [105] [106] [107] [108] [109] [110] [111] [112] [113] [114] [115]



Examples of these in use will be given in a separate, forthcoming file about Bach's ornaments.

d e f g h i j k l m n o p q r s

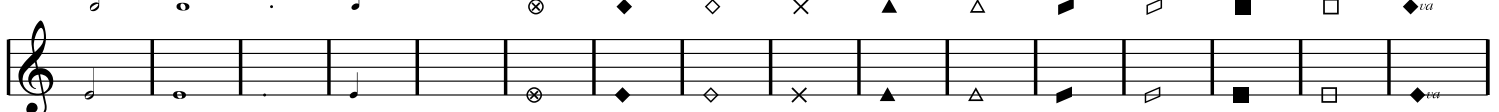
[116] [117] [118] [119] [120] [121] [122] [123] [124] [125] [126] [127] [128] [129] [130] [131]



t u v w x y z { | } ~ € , f

[132] [133] [134] [135] [136] [137] [138] [139] [140] [141] [142] [143] [144] [145] [146] [147]

For all blank-space characters and their widths, see the "Part B" file.



Not to be confused with 131. 135 is not part of the matching set 128-134 and 181-185.

, ... † ‡ ^ % Š < Œ Ž ‘ ’ “

148	149	150	151	152	153	154	155	156	
↑	↓	~	}	Ⓣ	⋈				

Example constructs:  
Examples of these in use will be given in a separate, forthcoming file about Bach's ornaments.

”   •   —   —   ~   ™   š   >   œ   œœœ >œœœœ>œ   šœ   ™œ   š>œ   ™>œ

157	158	159	160
-----	-----	-----	-----

Examples of these in use will be given in a separate, forthcoming file about Bach's ornaments.

ž   Ÿ

161	162	163	164	165	166	167	168	169	170
-----	-----	-----	-----	-----	-----	-----	-----	-----	-----

Example constructs:

ı   ¢   £   ¤   ¥   ¦   §   ¨   ©   ª

171	172	173	174	175	176	177	178	179	180
-----	-----	-----	-----	-----	-----	-----	-----	-----	-----

Example constructs:

«   ¬   ®   ¯   °   ±   ²   ³   ´

181	182	183	184	185	186	187	188	189	190	191	192	193	194	195	196
-----	-----	-----	-----	-----	-----	-----	-----	-----	-----	-----	-----	-----	-----	-----	-----

Examples of these in use will be given in a separate, forthcoming file about Bach's ornaments.

μ   ¶   ·   ,   ¹   º   »   ¼   ½   ¾   ¿   À   Á   Â   Ã   Ä

[197]	[198]	[199]	[200]	[201]	[202]	[203]	[204]	[205]
=	-	///	///	///	γ	ζ	-	-
À	Æ	Ç	È	É	Ê	Ë	Ì	Í

Example constructs:

Original stemming:

Original chord:

Original bass:

III

(8)

[206]	[207]	[208]	[209]	[210]	[211]	[212]	[213]	[214]	[215]
[	]	(	)	[	]	[	]	[	]
Î	Ï	Ð	Ñ	Ò	Ó	Ô	Õ	Ö	×

Example constructs:

II<sub>b</sub>

2

Ø

[217]	[218]	[219]	[220]	[221]	[222]	[240]	[241]
ù	ú	û	ü	ý	þ	ð	ñ
Ù	Ú	Û	Ü	Ý	Þ	Ð	Ñ

For the full set of characters not visible in tef265.t (32, 33, 66, 76, 136, 223-239 and 242-255), see "Part B" file. These include possible "spacers" of eight different widths as demonstrated here.

This symbol, called a "Direct", is seen in music from the 11th to 18th centuries. Placed on the staff at the end of one line of music, it indicates the first pitch of the next.

þ ð ñ "ö"÷"ó"ø" "ù"õ"ú"ô"

File "Part A" includes all characters of TablEdit's font tef265.ttf that contain visible characters, and "Part B" includes all that don't.

Font characters are numbered using what are called ASCII codes, which can be expressed as decimal numbers or hexadecimal numbers. Since not all of these characters can be readily typed on all computers, Matthieu has enabled the Text Manager to accept a combination of prefix "\x" and the hexadecimal code for the character. When such a combination is entered, the character itself will appear after the text item is displayed.

Using boxes above the tablature staff, I was able to show the codes in decimal form, not hexadecimal, but the hexadecimal equivalents (here with prefix "\x" added for Text Manager) are as follows:

Dec	Hex	Dec	Hex	Dec	Hex	Dec	Hex	Dec	Hex
---	----	---	----	---	----	---	----	---	----
32 = \x20	77 = \x4D	122 = \x7A	167 = \xA7	212 = \xD4					
33 = \x21	78 = \x4E	123 = \x7B	168 = \xA8	213 = \xD5					
34 = \x22	79 = \x4F	124 = \x7C	169 = \xA9	214 = \xD6					
35 = \x23	80 = \x50	125 = \x7D	170 = \xAA	215 = \xD7					
36 = \x24	81 = \x51	126 = \x7E	171 = \xAB	216 = \xD8					
37 = \x25	82 = \x52	127 = \x7F	172 = \xAC	217 = \xD9					
38 = \x26	83 = \x53	128 = \x80	173 = \xAD	218 = \xDA					
39 = \x27	84 = \x54	129 = \x81	174 = \xAE	219 = \xDB					
40 = \x28	85 = \x55	130 = \x82	175 = \xAF	220 = \xDC					
41 = \x29	86 = \x56	131 = \x83	176 = \xB0	221 = \xDD					
42 = \x2A	87 = \x57	132 = \x84	177 = \xB1	222 = \xDE					
43 = \x2B	88 = \x58	133 = \x85	178 = \xB2	223 = \xDF					
44 = \x2C	89 = \x59	134 = \x86	179 = \xB3	224 = \xE0					
45 = \x2D	90 = \x5A	135 = \x87	180 = \xB4	225 = \xE1					
46 = \x2E	91 = \x5B	136 = \x88	181 = \xB5	226 = \xE2					
47 = \x2F	92 = \x5C	137 = \x89	182 = \xB6	227 = \xE3					
48 = \x30	93 = \x5D	138 = \x8A	183 = \xB7	228 = \xE4					
49 = \x31	94 = \x5E	139 = \x8B	184 = \xB8	229 = \xE5					
50 = \x32	95 = \x5F	140 = \x8C	185 = \xB9	230 = \xE6					
51 = \x33	96 = \x60	141 = \x8D	186 = \xBA	231 = \xE7					
52 = \x34	97 = \x61	142 = \x8E	187 = \xBB	232 = \xE8					
53 = \x35	98 = \x62	143 = \x8F	188 = \xBC	233 = \xE9					
54 = \x36	99 = \x63	144 = \x90	189 = \xBD	234 = \xEA					
55 = \x37	100 = \x64	145 = \x91	190 = \xBE	235 = \xEB					
56 = \x38	101 = \x65	146 = \x92	191 = \xBF	236 = \xEC					
57 = \x39	102 = \x66	147 = \x93	192 = \xC0	237 = \xED					
58 = \x3A	103 = \x67	148 = \x94	193 = \xC1	238 = \xEE					
59 = \x3B	104 = \x68	149 = \x95	194 = \xC2	239 = \xEF					
60 = \x3C	105 = \x69	150 = \x96	195 = \xC3	240 = \xF0					
61 = \x3D	106 = \x6A	151 = \x97	196 = \xC4	241 = \xF1					
62 = \x3E	107 = \x6B	152 = \x98	197 = \xC5	242 = \xF2					
63 = \x3F	108 = \x6C	153 = \x99	198 = \xC6	243 = \xF3					
64 = \x40	109 = \x6D	154 = \x9A	199 = \xC7	244 = \xF4					
65 = \x41	110 = \x6E	155 = \x9B	200 = \xC8	245 = \xF5					
66 = \x42	111 = \x6F	156 = \x9C	201 = \xC9	246 = \xF6					
67 = \x43	112 = \x70	157 = \x9D	202 = \xCA	247 = \xF7					
68 = \x44	113 = \x71	158 = \x9E	203 = \xCB	248 = \xF8					
69 = \x45	114 = \x72	159 = \x9F	204 = \xCC	249 = \xF9					
70 = \x46	115 = \x73	160 = \xA0	205 = \xCD	250 = \xFA					
71 = \x47	116 = \x74	161 = \xA1	206 = \xCE	251 = \xFB					
72 = \x48	117 = \x75	162 = \xA2	207 = \xCF	252 = \xFC					
73 = \x49	118 = \x76	163 = \xA3	208 = \xD0	253 = \xFD					
74 = \x4A	119 = \x77	164 = \xA4	209 = \xD1	254 = \xFE					
75 = \x4B	120 = \x78	165 = \xA5	210 = \xD2	255 = \xFF					
76 = \x4C	121 = \x79	166 = \xA6	211 = \xD3						